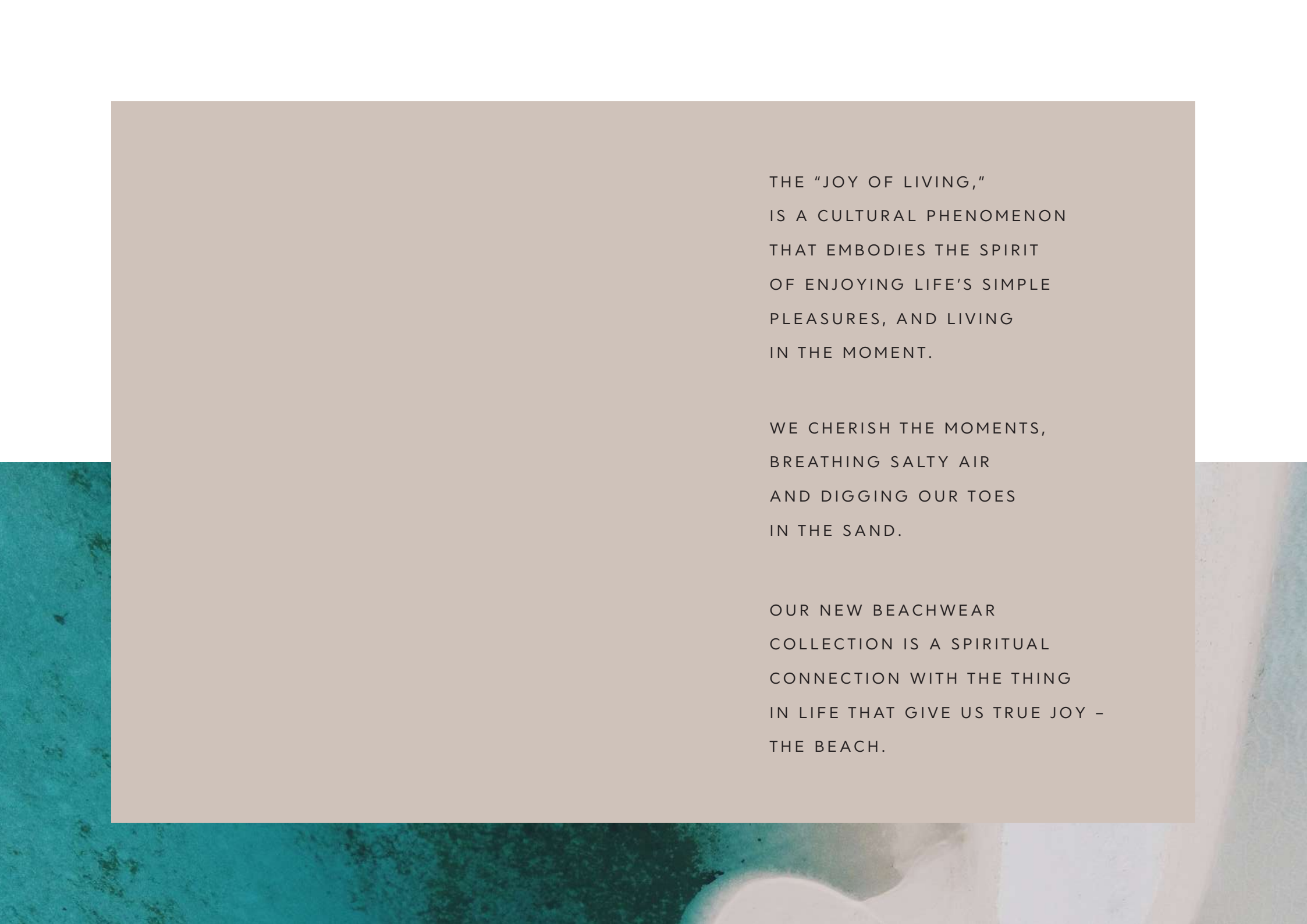




J O I E D E V I V R E

S S 2 4 C O L L E C T I O N



THE "JOY OF LIVING,"  
IS A CULTURAL PHENOMENON  
THAT EMBODIES THE SPIRIT  
OF ENJOYING LIFE'S SIMPLE  
PLEASURES, AND LIVING  
IN THE MOMENT.

WE CHERISH THE MOMENTS,  
BREATHING SALTY AIR  
AND DIGGING OUR TOES  
IN THE SAND.

OUR NEW BEACHWEAR  
COLLECTION IS A SPIRITUAL  
CONNECTION WITH THE THING  
IN LIFE THAT GIVE US TRUE JOY -  
THE BEACH.



S W I M W E A R

# EMMA BIKINI

- TRIANGLE STYLE TOP
- ADJUSTABLE STRAPS
- REMOVABLE LIGHT PADS
- THE ULTIMATE SUN BAKING BOTTOM, THIN SIDES, CHEEKY CUT
- FULLY LINED
- THIS IS A BEST-SELLING, ESSENTIAL TO EVERY GIRL'S WARDROBE

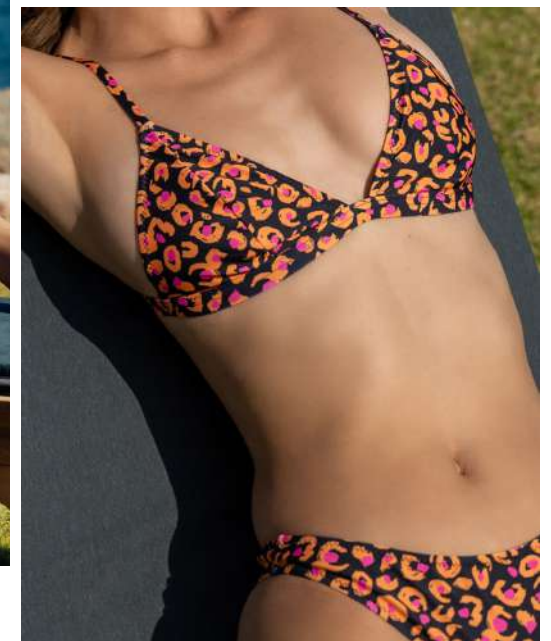
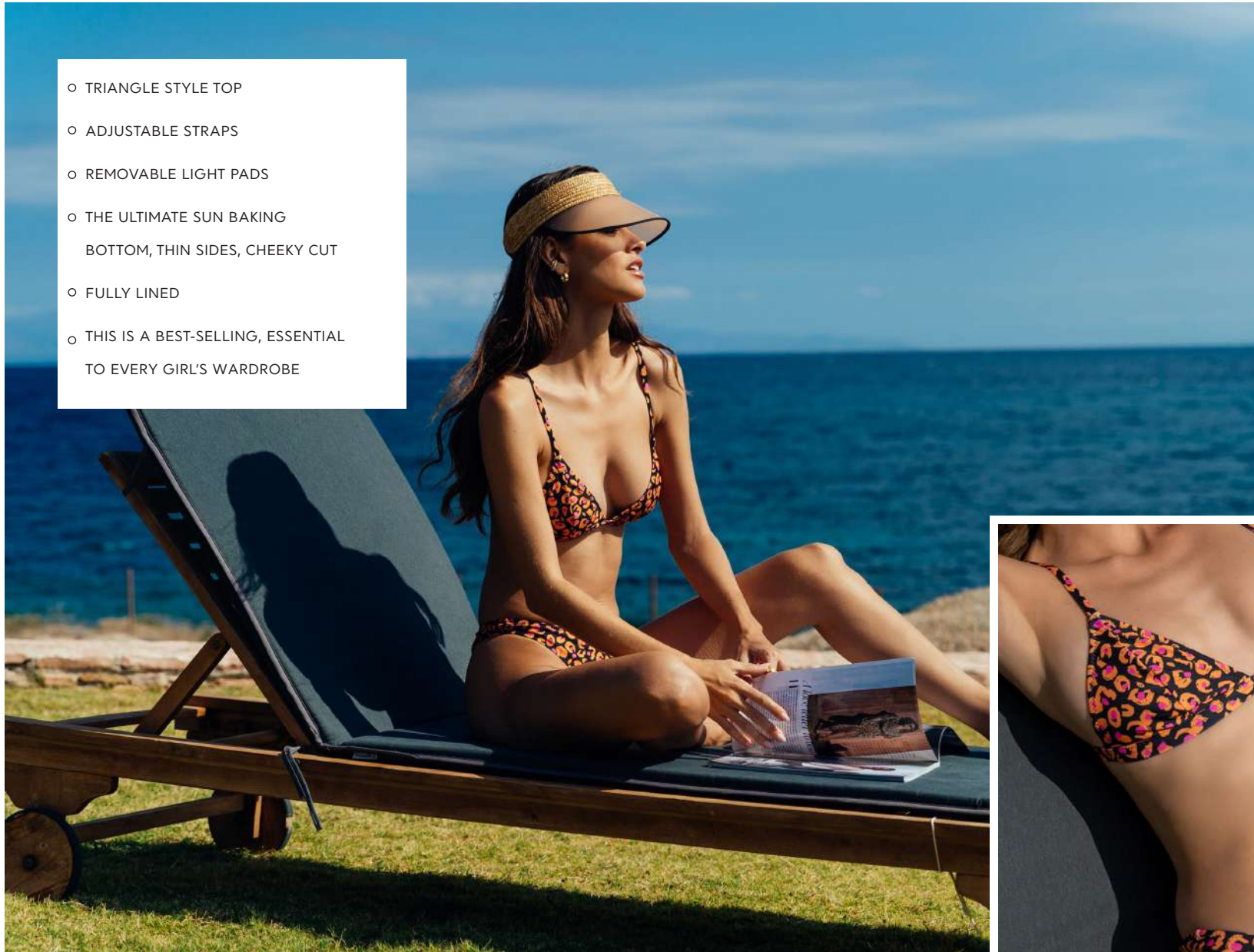
leo mango



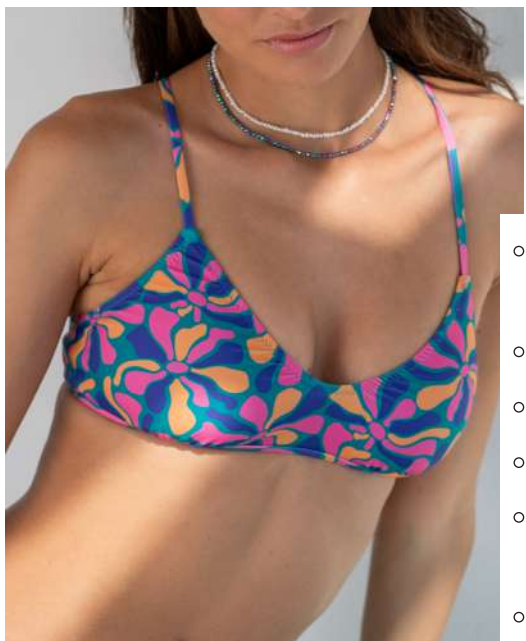
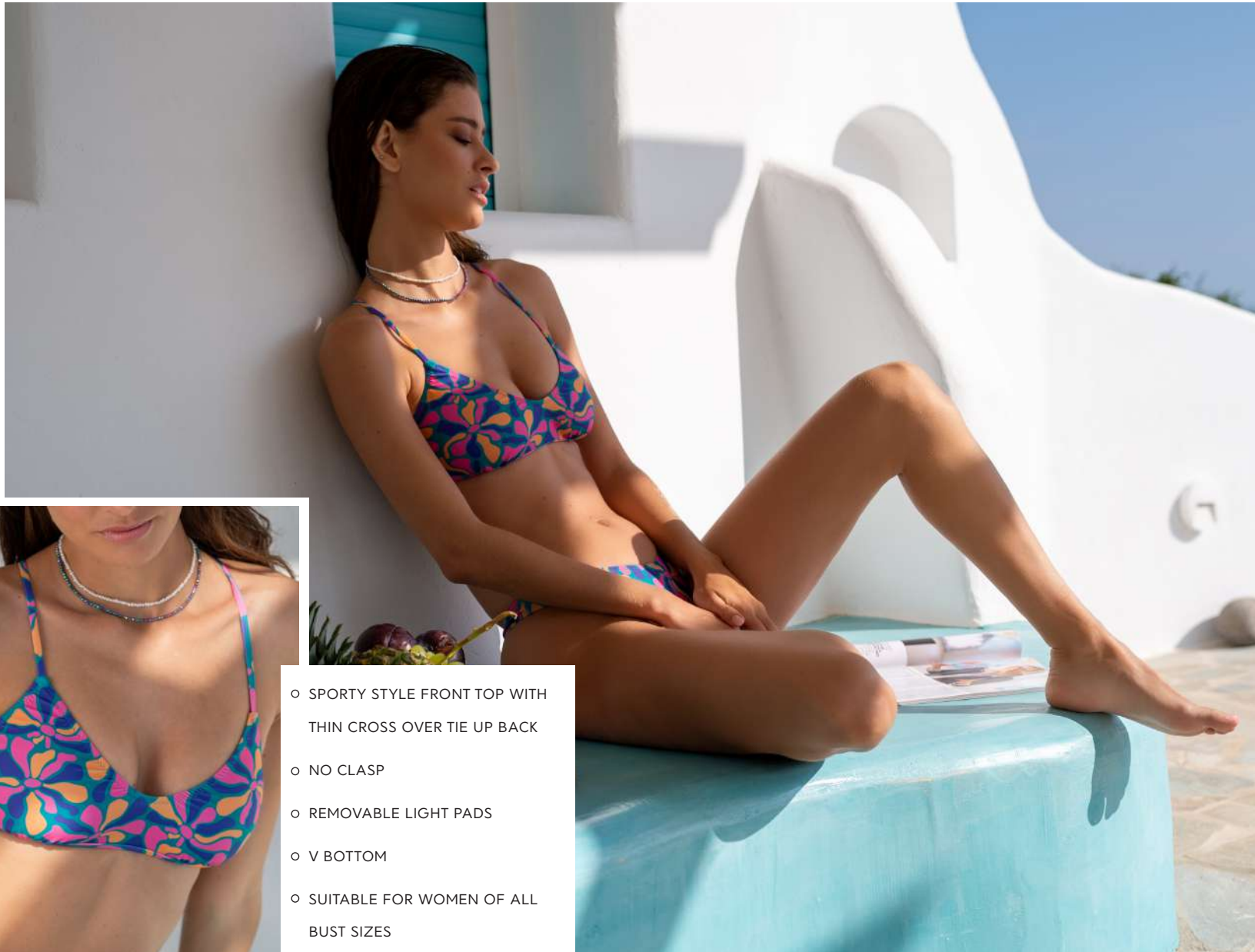
matisse green



matisse blue



M I L A   B I K I N I

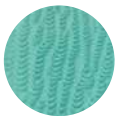


- SPORTY STYLE FRONT TOP WITH THIN CROSS OVER TIE UP BACK
- NO CLASP
- REMOVABLE LIGHT PADS
- V BOTTOM
- SUITABLE FOR WOMEN OF ALL BUST SIZES
- FULLY LINED

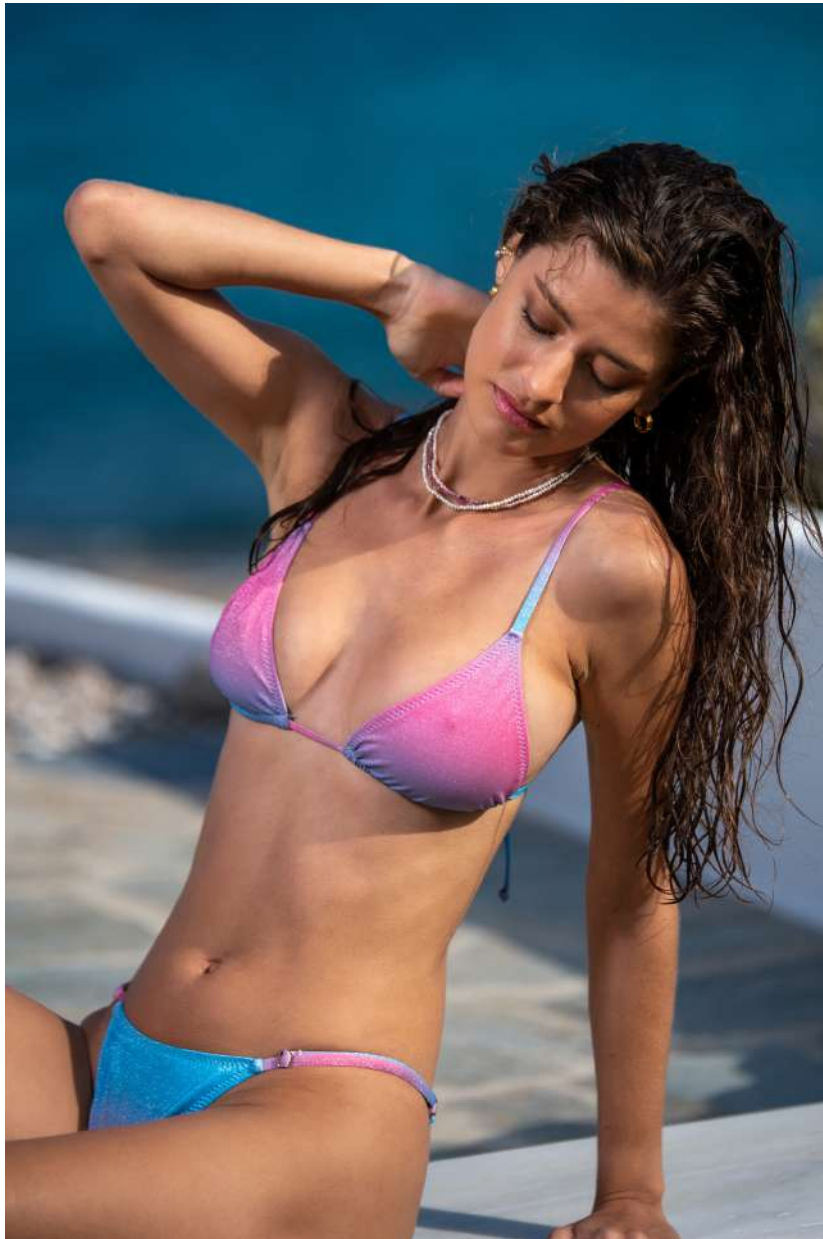
matisse green



frozen crinkle



J A D E B I K I N I



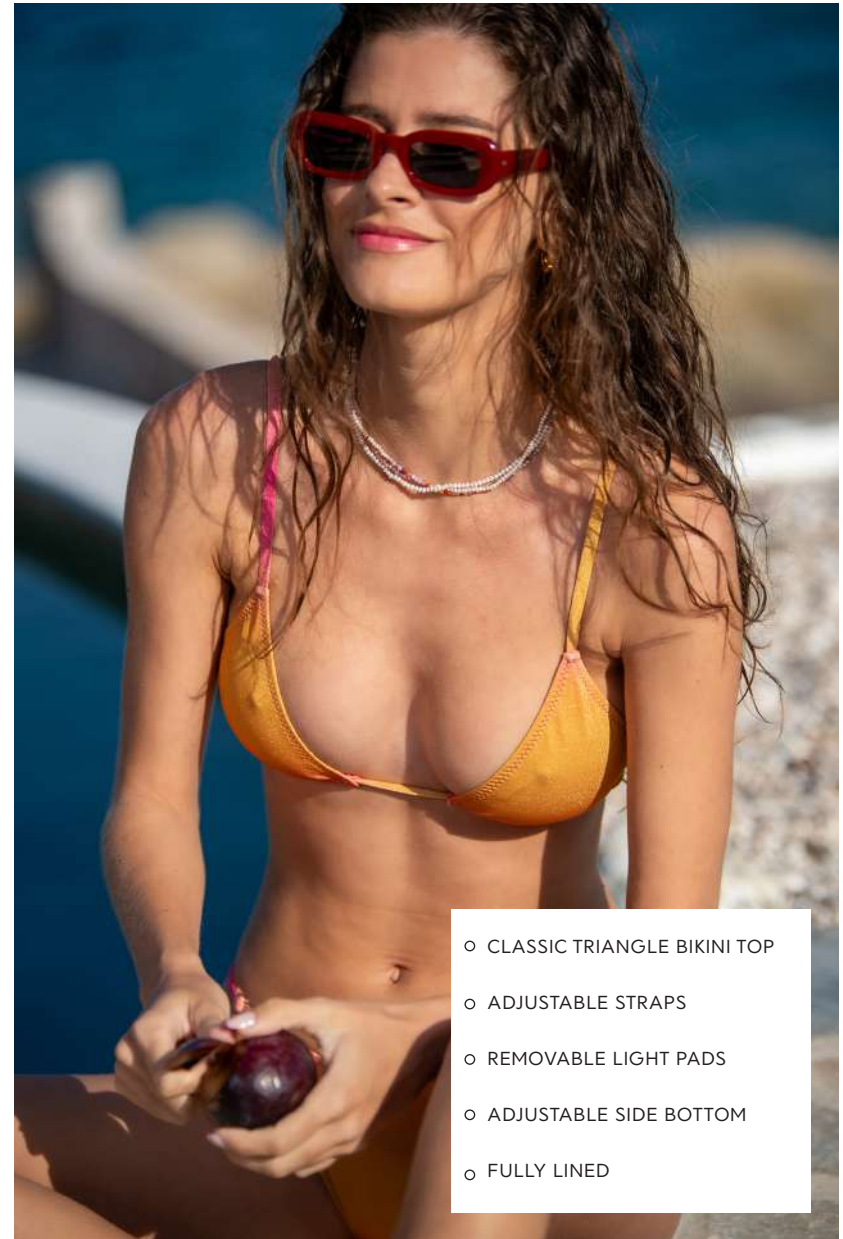
mermaid blue



mermaid orange



zebra sky blue



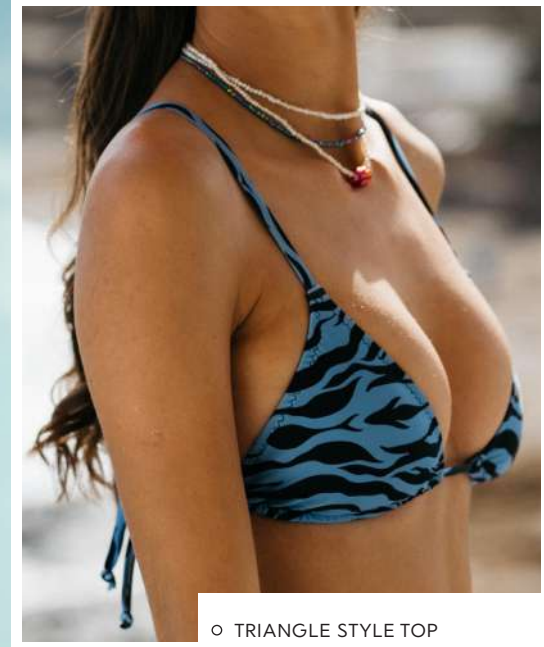
- CLASSIC TRIANGLE BIKINI TOP
- ADJUSTABLE STRAPS
- REMOVABLE LIGHT PADS
- ADJUSTABLE SIDE BOTTOM
- FULLY LINED

# JEMMA BIKINI

zebra sky blue

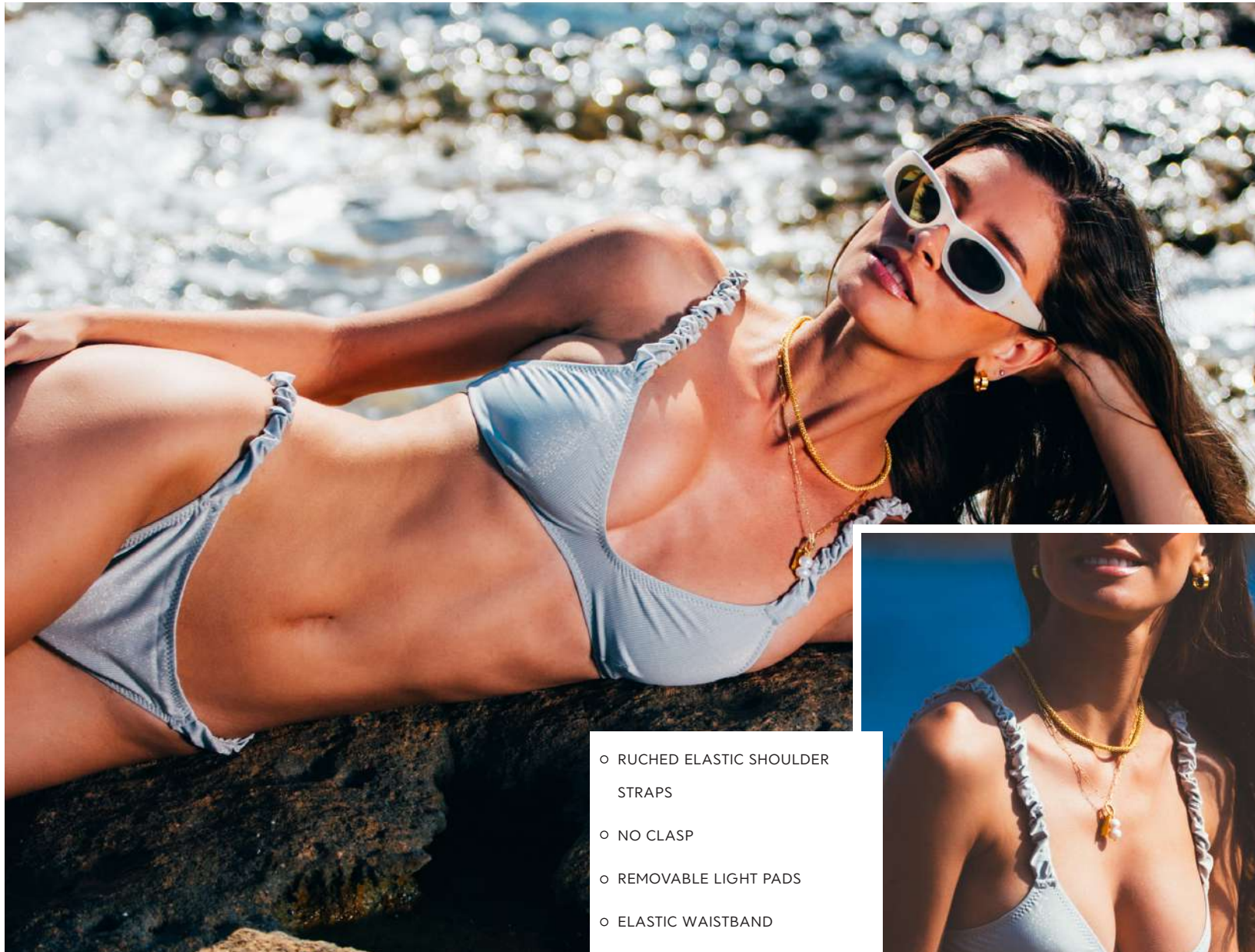


creamy gold



- TRIANGLE STYLE TOP
- ADJUSTABLE STRAPS
- REMOVABLE LIGHT PADS
- THE ULTIMATE SUN BAKING BOTTOM, THIN SIDES, CHEEKY CUT
- FULLY LINED
- THIS IS A BEST-SELLING, ESSENTIAL TO EVERY GIRL'S WARDROBE

Z O Y A B I K I N I



- RUCHED ELASTIC SHOULDER STRAPS
- NO CLASP
- REMOVABLE LIGHT PADS
- ELASTIC WAISTBAND
- BRAZILIAN CUT
- FULLY LINED

mermaid blue



matisse blue



creamy gold



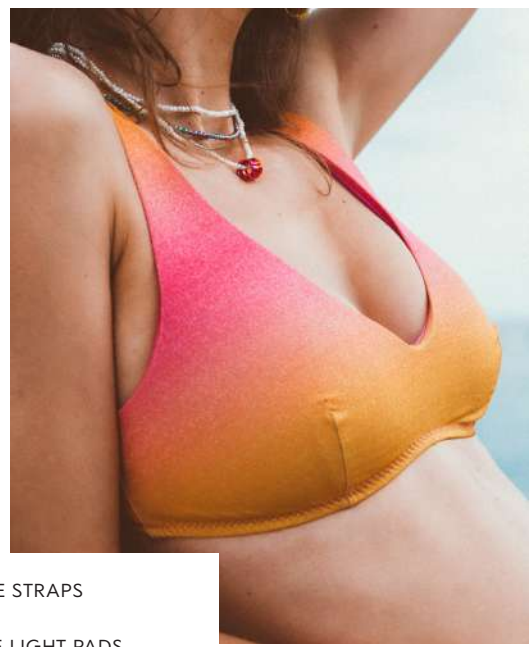
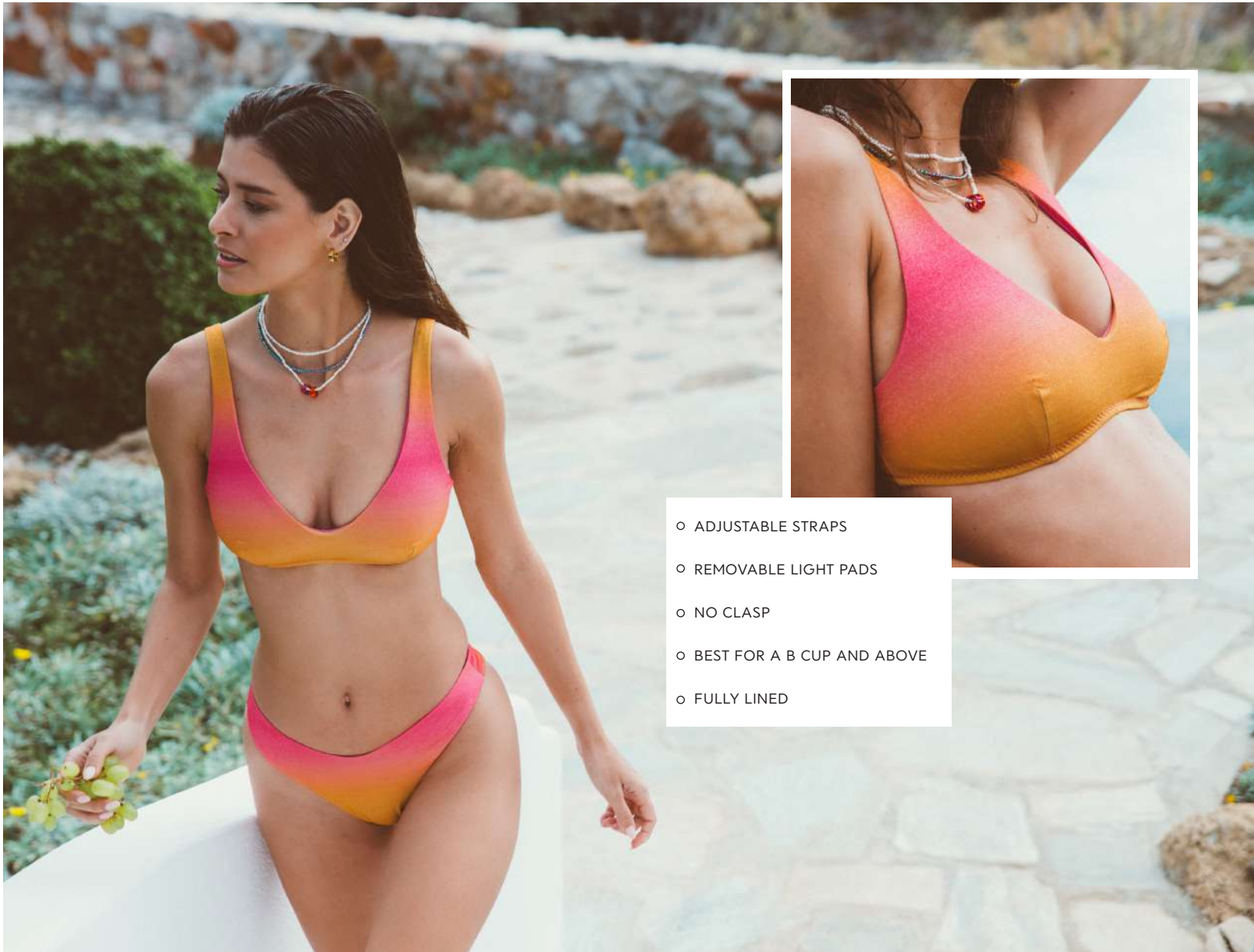


NIOVI BIKINI

leo mango



mermaid orange



- ADJUSTABLE STRAPS
- REMOVABLE LIGHT PADS
- NO CLASP
- BEST FOR A B CUP AND ABOVE
- FULLY LINED

BELLA BIKINI



blue/frozen  
crinkle



brown/dusty  
pink crinkle



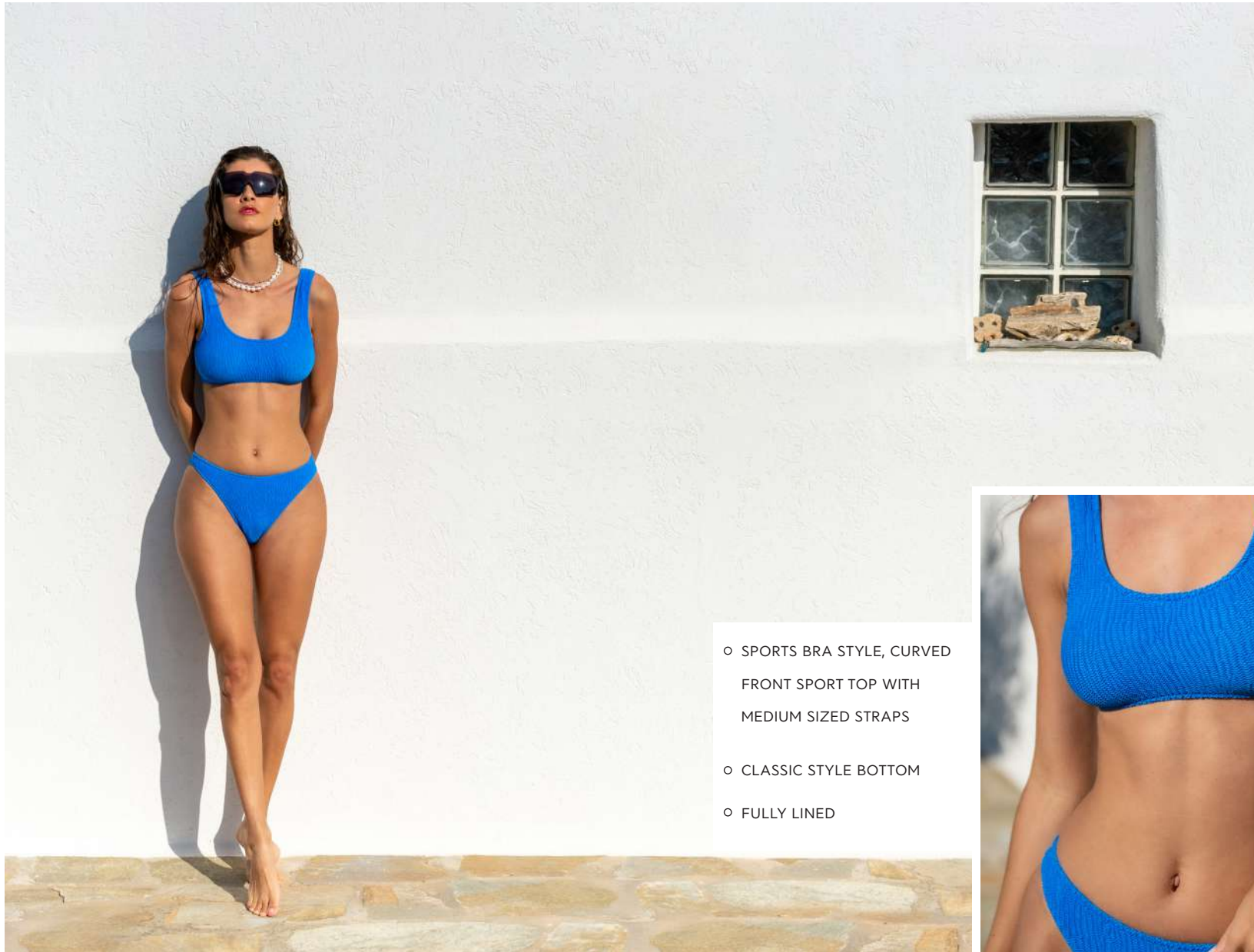
- SPORTS BRA
- HIGH LEG V BOTTOM
- BEST FOR A B CUP & ABOVE
- FULLY LINED

SILIA BIKINI

blue crinkle



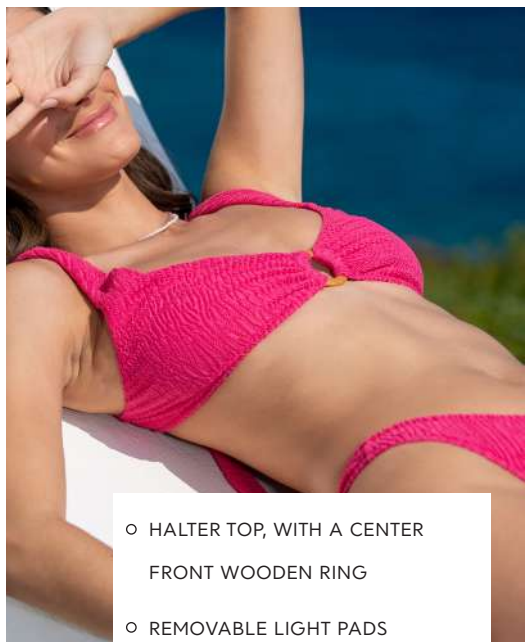
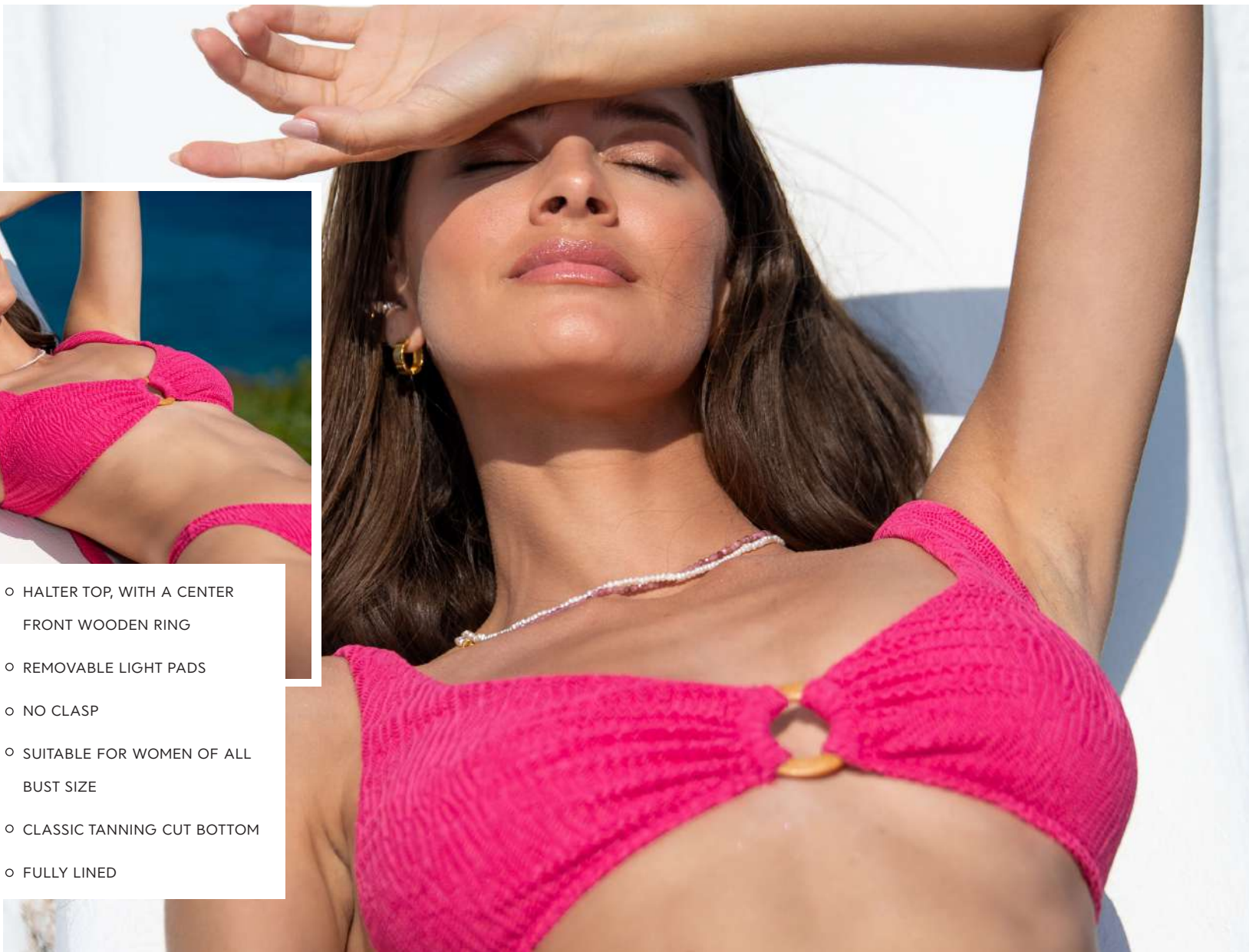
dusty pink crinkle



- SPORTS BRA STYLE, CURVED FRONT SPORT TOP WITH MEDIUM SIZED STRAPS
- CLASSIC STYLE BOTTOM
- FULLY LINED



# SILENA BIKINI



- HALTER TOP, WITH A CENTER FRONT WOODEN RING
- REMOVABLE LIGHT PADS
- NO CLASP
- SUITABLE FOR WOMEN OF ALL BUST SIZE
- CLASSIC TANNING CUT BOTTOM
- FULLY LINED

brown crinkle

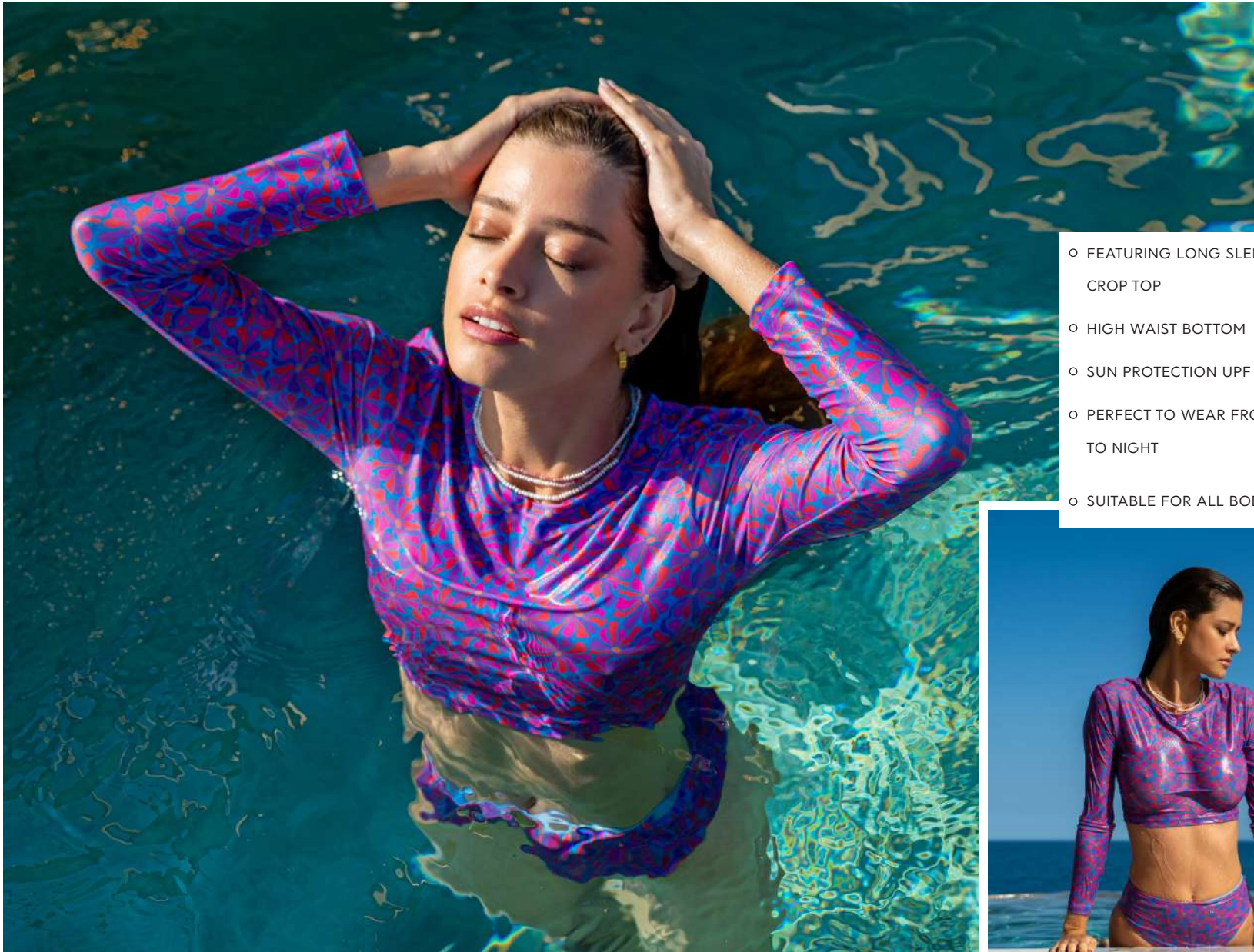


dusty pink crinkle



MAYA BIKINI

matisse blue



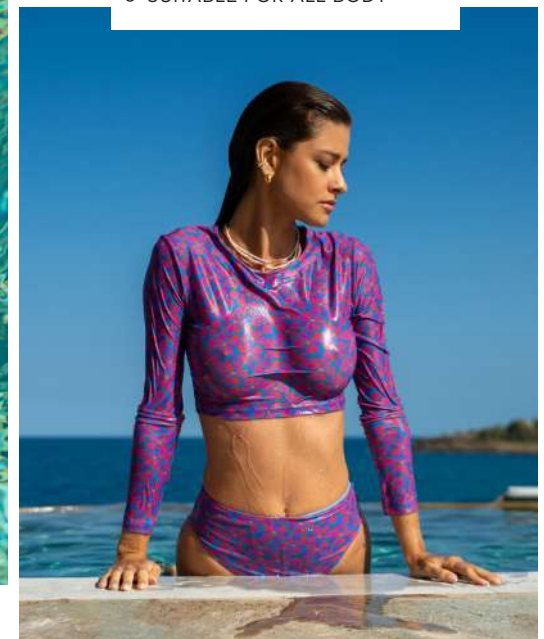
○ FEATURING LONG SLEEVE,  
CROP TOP

○ HIGH WAIST BOTTOM

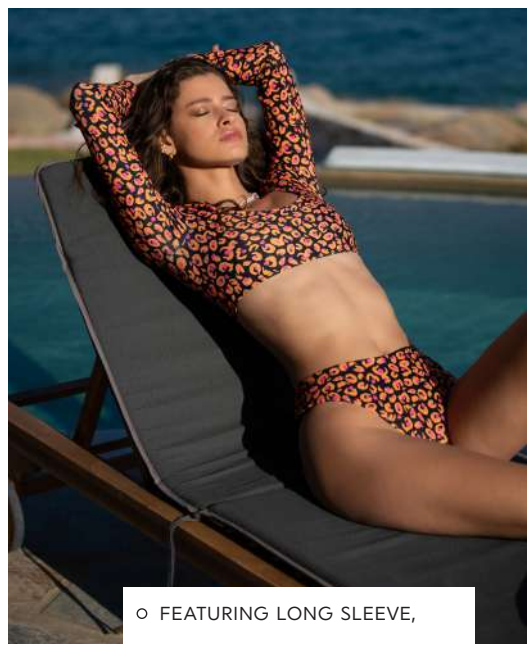
○ SUN PROTECTION UPF 50+

○ PERFECT TO WEAR FROM DAY  
TO NIGHT

○ SUITABLE FOR ALL BODY



ELIE BIKINI



- FEATURING LONG SLEEVE,  
CROP TOP
- HIGH WAIST BOTTOM
- SUN PROTECTION UPF 50+
- PERFECT TO WEAR FROM DAY  
TO NIGHT
- SUITABLE FOR ALL BODY



leo mango



# CAELIA ONEPIECE

blue crinkle



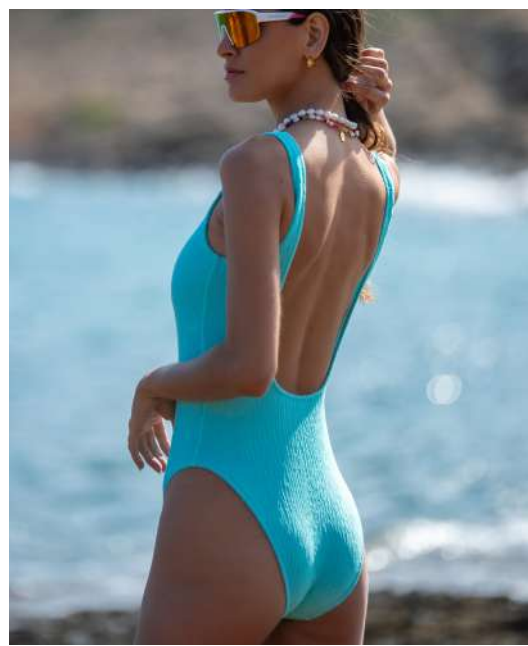
frozen crinkle



brown crinkle



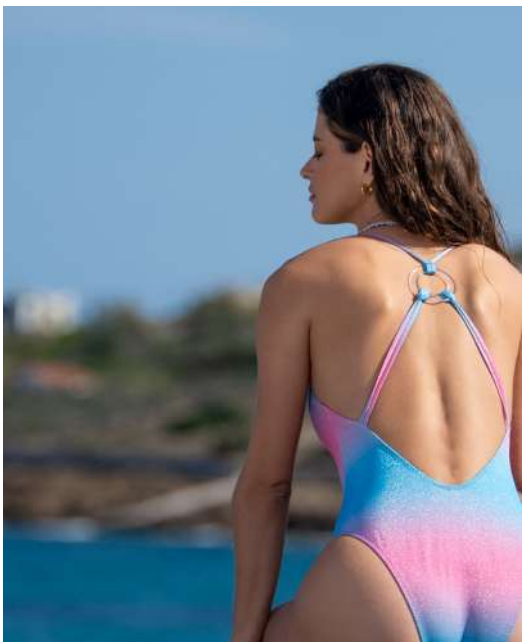
dusty pink crinkle



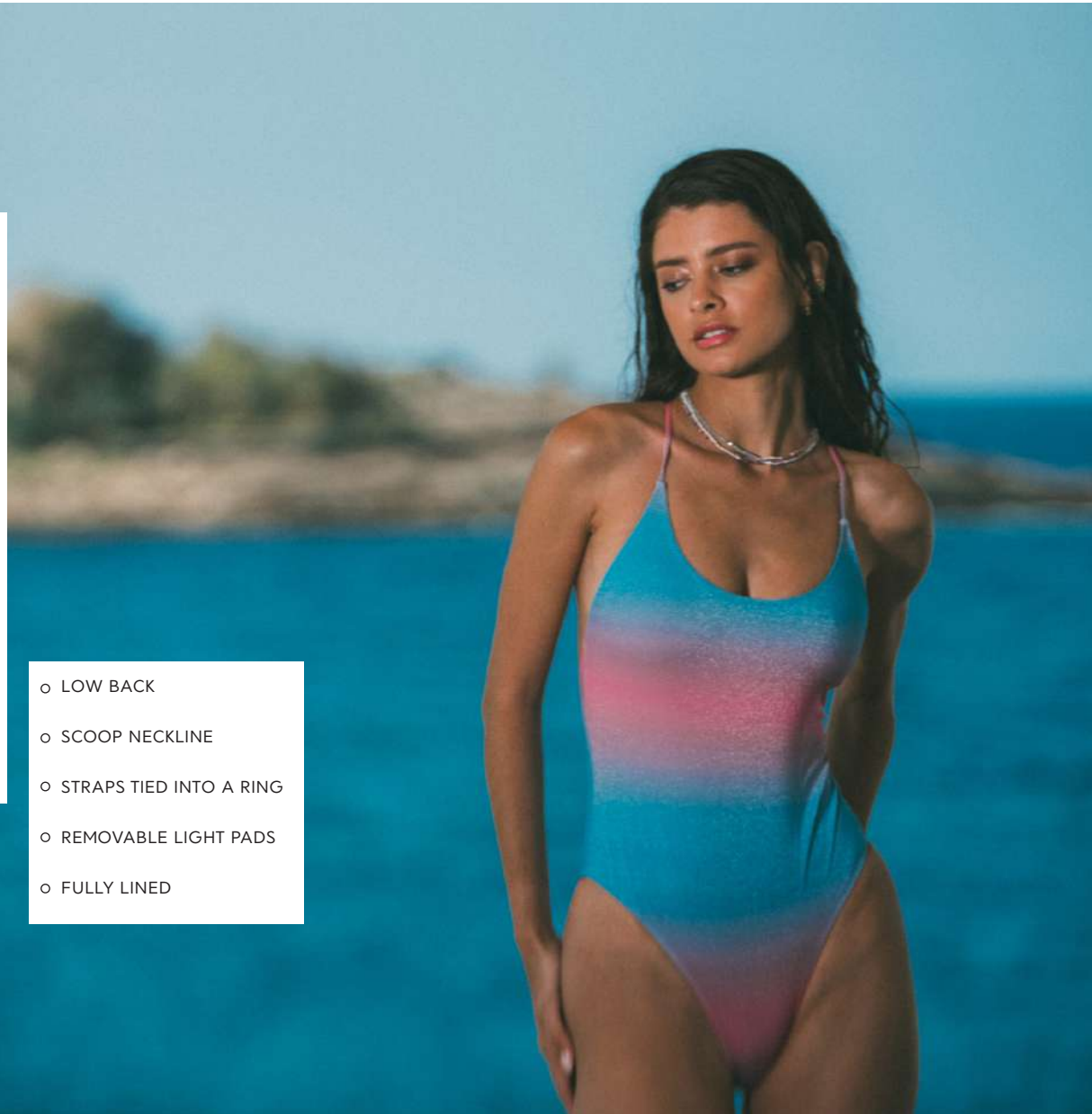
- CAELIA IS THE PERFECT STYLISH BODY CONTOURING FULL PIECE
- CRINKLE FABRIC
- FEATURING THICK STRAPS, MODERN SQUARE NECKLINE AND BACK, WITH DETACHED CUPS
- SUITABLE FOR ALL BODY TYPES



R A L U O N E P I E C E



- LOW BACK
- SCOOP NECKLINE
- STRAPS TIED INTO A RING
- REMOVABLE LIGHT PADS
- FULLY LINED



mermaid blue



mermaid orange



zebra sky blue



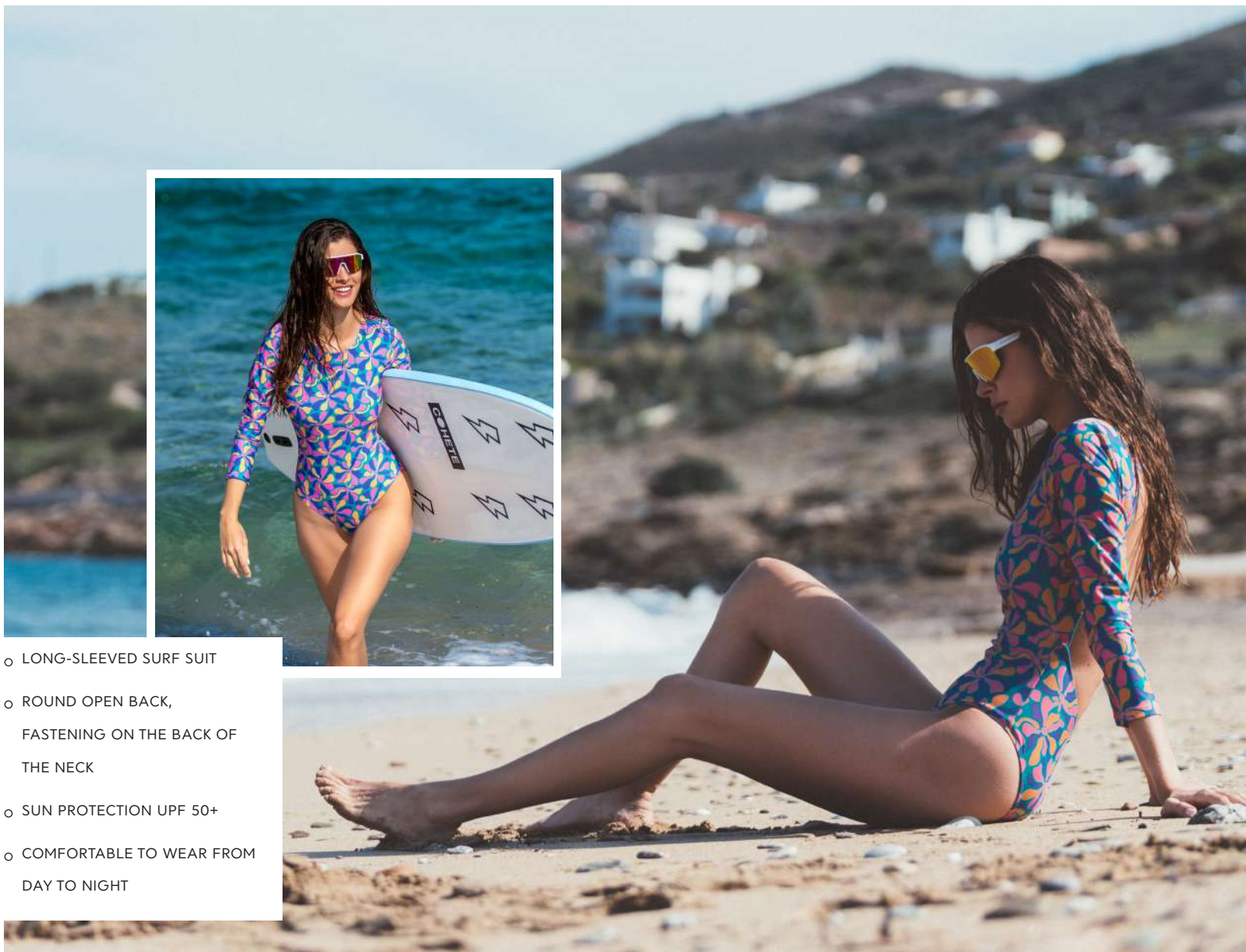


# JOLI SURF SUIT

matisse green



leo mango



- LONG-SLEEVED SURF SUIT
- ROUND OPEN BACK, FASTENING ON THE BACK OF THE NECK
- SUN PROTECTION UPF 50+
- COMFORTABLE TO WEAR FROM DAY TO NIGHT



R E S O R T   W E A R

A C C E S S O R I E S

## A M A R I L Y S P L A Y S U I T

- EASY-TO-WEAR PLAYSUIT FOR ALL OCCASIONS
- DESIGNED FOR A SLIGHTLY LOOSE FIT

blue



green



matisse green



## I R I D A D R E S S

matisse blue



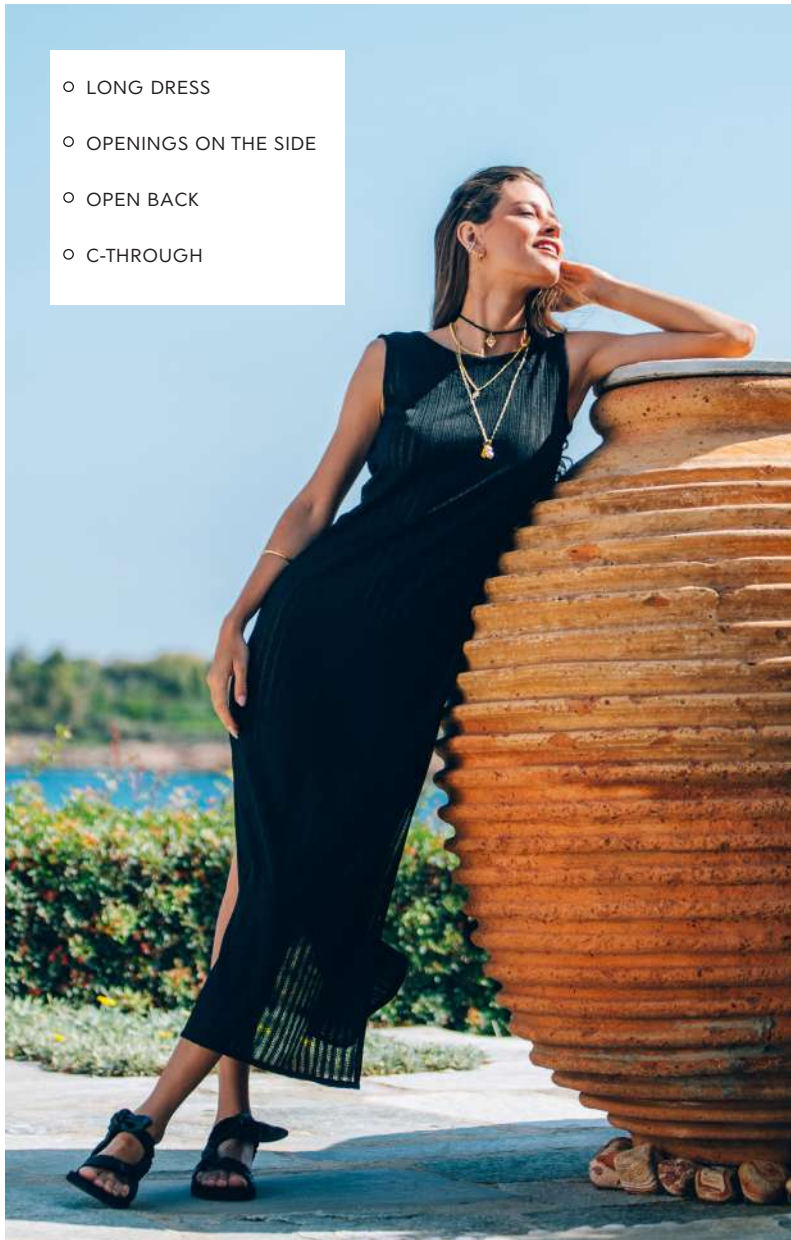
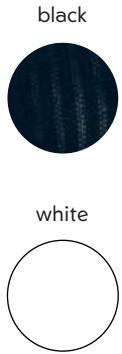
zebra sky blue



- PRINTED NET DRESS
- LONG SLEEVE
- C-THROUGH

# L I T O   D R E S S

- LONG DRESS
- OPENINGS ON THE SIDE
- OPEN BACK
- C-THROUGH



# L E Y A   P A R E O

matisse blue



matisse green



zebra sky blue



leo mango



- THE LEYA PAREO IS DESIGNED FOR COMFORT AND STYLE
- MATCHES PERFECTLY WITH YOUR SWIMSUITS
- DIMENSIONS 1,00 X 1,50 CM (ONE SIZE)
- SOFT TOUCH

ALL DAY BAG



- o DIMENSIONS 40X65CM
- o OPEN TOP
- o WATERPROOF LINING
- o INTERIOR POCKET
- o OUT 100% COTTON CANVAS (WATERPROOF)

matisse blue



matisse green



zebra sky blue



leo mango



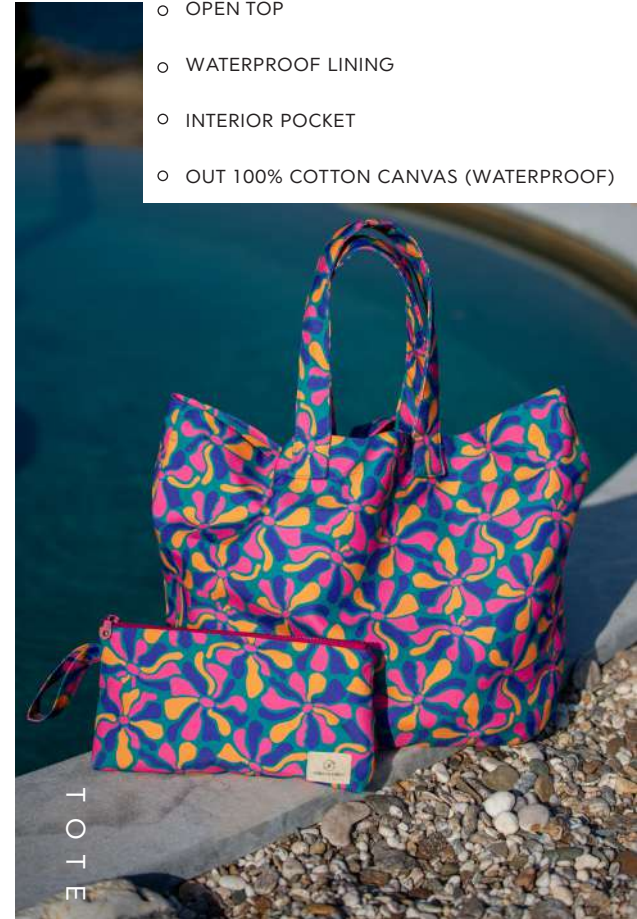
matisse green



zebra sky blue



- o DIMENSIONS L35 X W15 X H25 CM
- o TOP HANDLES
- o OPEN TOP
- o WATERPROOF LINING
- o INTERIOR POCKET
- o OUT 100% COTTON CANVAS (WATERPROOF)



TOTE BAG

matisse blue



matisse green



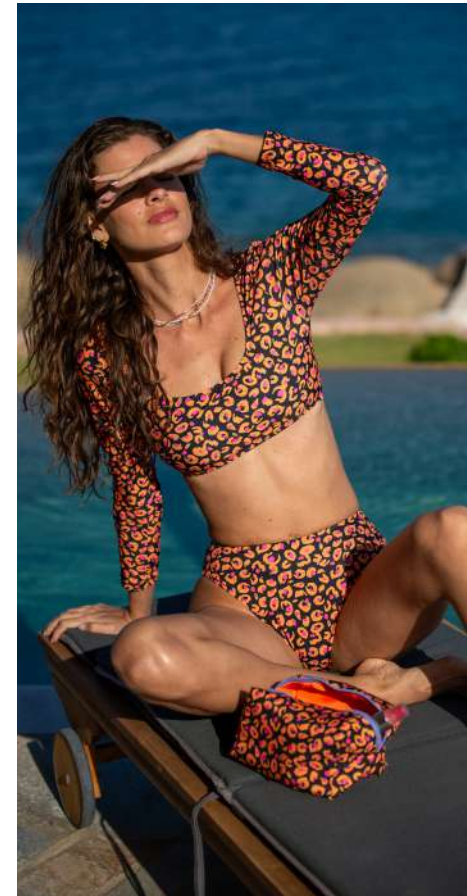
POUCH BAG

- TOP ZIPPER CLOSURE
- HANDY STRAP FOR EASY CARRY
- MAKE UP POUCH PERFECTLY ACCOMMODATES ALL YOUR NEEDS FOR DAILY USE OR TRAVEL
- WATERPROOF FABRIC PROTECTS ITEMS FROM WET AND MAKES IT EASILY WIPED CLEAN



WRISTLETS

- SIZE MEDIUM 25X18CM / SIZE LARGE 35X25CM
- TOP ZIPPER CLOSURE
- WRIST HANDLE
- INTERIOR WATERPROOF
- LINING



COSMETIC POUCH

- DIMENSIONS L22 X W11 X H14 CM
- TOP ZIPPER CLOSURE
- INTERIOR WATERPROOF LINING
- OUT 100% COTTON CANVAS

zebra sky blue



leo mango

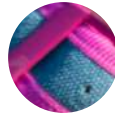


NORDIC SANDALS



- MADE FROM SUSTAINABLE CANVAS FABRIC
- EMBELLISHED WITH GOLD-TONE BUCKLED STRAPS
- COMFORTABLE AND STYLISH AT THE SAME TIME

blue/pink



mustard



khaki



pink/  
matisse blue



pink/  
matisse green



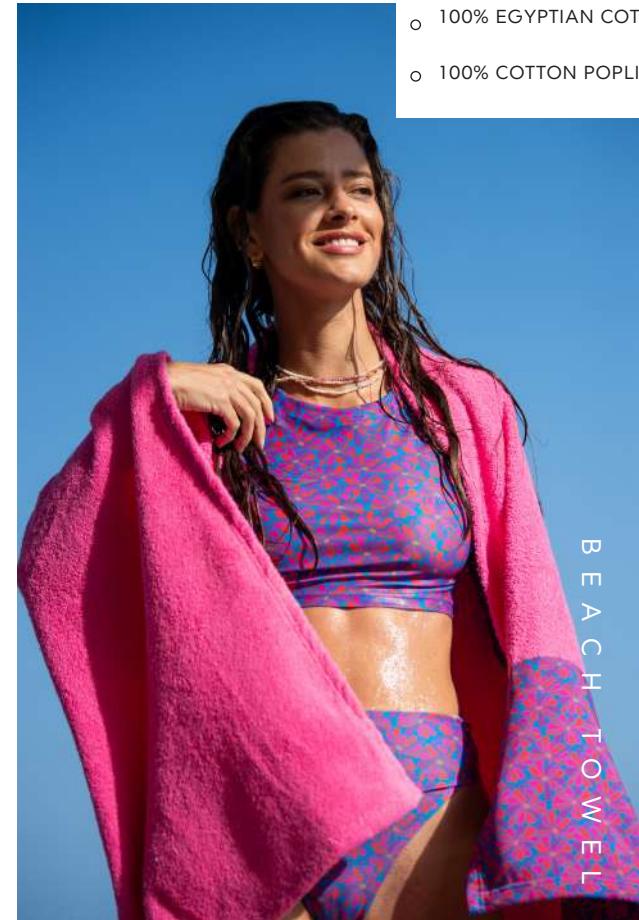
mustard/  
leo mango



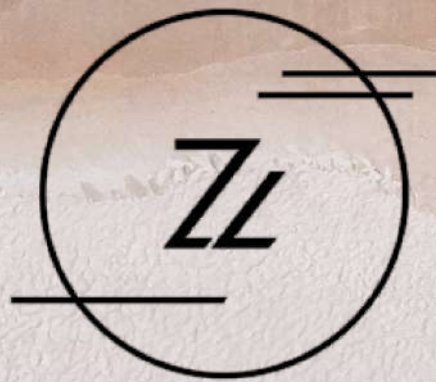
blue/  
zebra sky blue



- EXTRA-LONG BEACH TOWEL
- SIZE: 100CM X 180 CM
- LIGHTWEIGHT & BREATHABLE
- 100% EGYPTIAN COTTON TOWEL
- 100% COTTON POPLIN FABRIC



BEACH TOWEL



INSPIRED BY GREEK SUMMERS,  
MESMERIZING BEACHES, COLORFUL SKIES,  
THE SHADES OF WAVES  
AND GOOD KARMA.

ZEBRAS & LIBRAS SHOWROOM

KAZANTZAKI 64, GERAKAS, ATHENS  
TEL. +30 213 034 0131

[INFO@ZEBRASANDLIBRAS.COM](mailto:INFO@ZEBRASANDLIBRAS.COM)